

Island Bed Crouch End

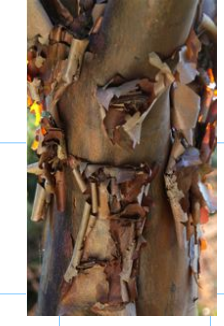


The design was influenced by the client's reference to plants seen in Winter Gardens both at Anglesey Abbey and the Cambridge botanic and specific plants, Cornus, Mahonia, Hebe, Bergenia and Hamamelis used in these gardens have been included in the design.

The focal point of the planting is a multi stemmed Acer griseum. A small ornamental tree, paperbark maple has small yellow flowers in spring, great autumn foliage colour, picturesque peeling bark, and a stately habit.

Structure is provided by the large shrubs, evergreen coarse leaved Mahonia and the only deciduous plant in the scheme Hamamelis has been included for its Winter flowering. Evergreen ground cover is provided by coarse textured Bergenia and fine textured Vinca.

The larger shrubs Cornus, Rosemarinus and Hedera are repetitively planted around the central Acer. The chosen plants are pollution tolerant, low maintenance and vandal proof.



Acer griseum © RHS



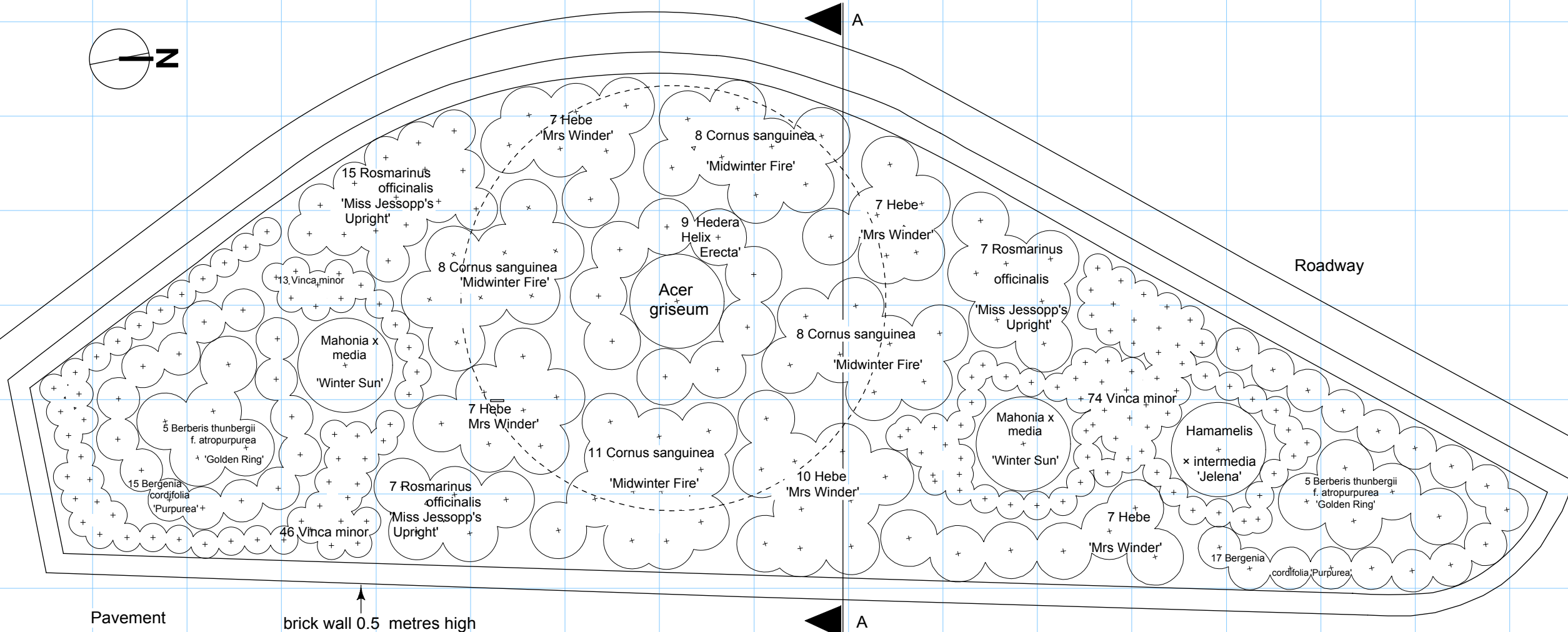
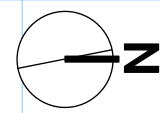
Bergenia cordifolia 'Purpurea' © RHS



Hebe 'Mrs Winder' © RHS



Cornus sanguinea 'Midwinter Fire' © RHS



Designer	Reg Wickings 13 Homecroft Road Sydenham London SE26 5QN
Email	rwick1234@aol.com
Mobile	07876440955
Client's Name	Crouch End Co-op
Job Title	Island Bed Replanting
Drawing Title	Planting Plan/Elevation
Scale	1:50
Drawing Number	002-001
Date	April 24 th 2014